

MATH WORD PROBLEMS



Name:

Word Problems

1. A laptop costs \$879. A customer buys 2 at once.
He gets a discount of \$120 in total.
How much does he have to pay?

_____ dollars



2. Oliver has 422 beads.
Jack has 379 beads.
How many beads do they have together?

_____ beads

3. Sophie earns \$80 every week.
She saves half of her money each week.
How many weeks will it take for her to save \$320?

_____ weeks



4. After exercising, Ruben drinks one liter of water.
Max drinks 628 milliliters.
How many milliliters more does Ruben drink than Max?

_____ milliliters

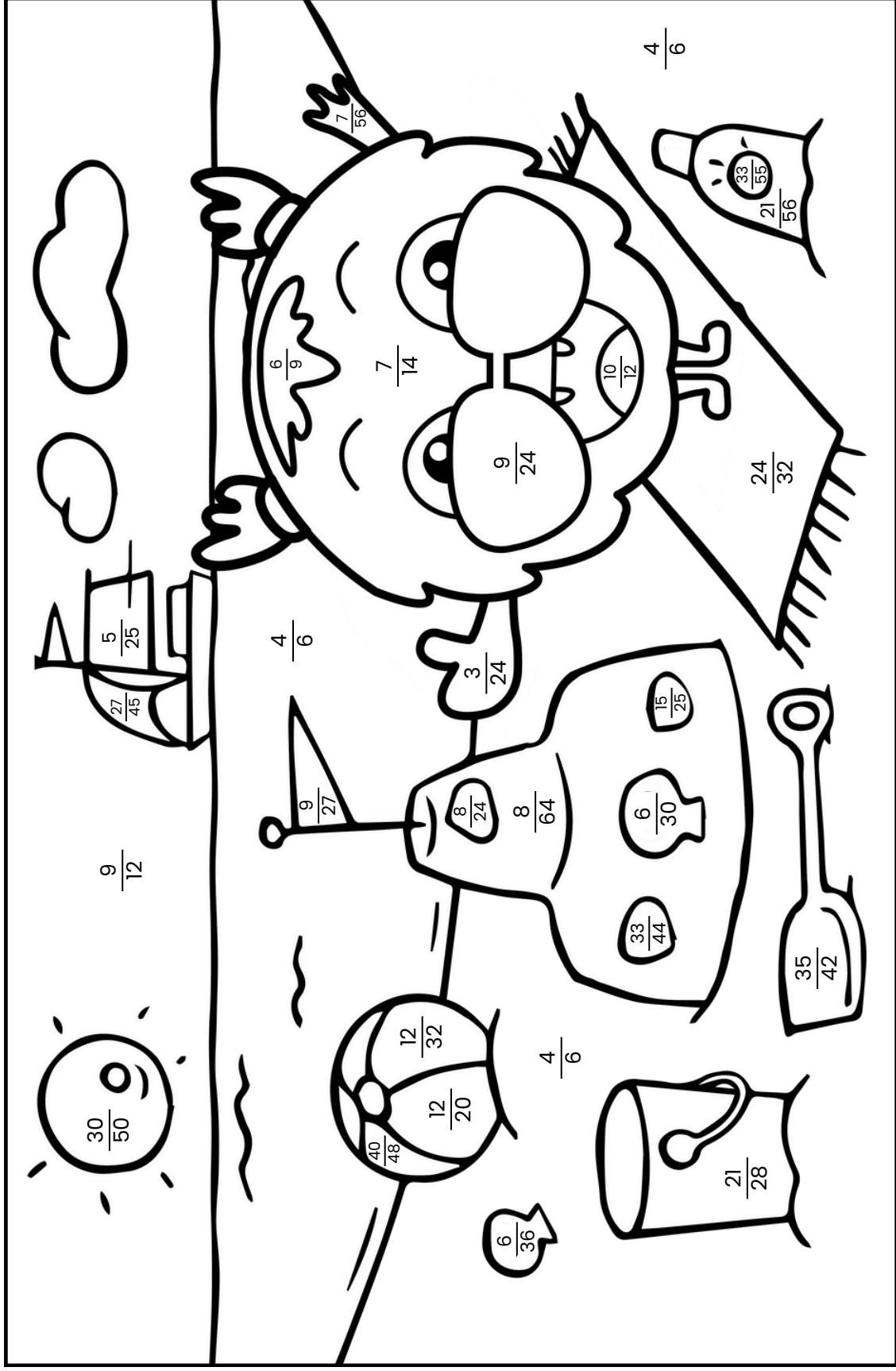
5. The party starts at 16:35.
It is now 14:20.
How many minutes until the party starts?

_____ minutes



Done? Practice 10 word problems at www.mathwordproblems.com
You can play a math game afterward!

Simplifying Fractions



$$\frac{1}{2}$$

$$\frac{3}{4}$$

$$\frac{3}{5}$$

$$\frac{1}{5}$$

$$\frac{2}{3}$$

$$\frac{5}{6}$$

$$\frac{1}{3}$$

$$\frac{1}{6}$$

$$\frac{1}{8}$$

$$\frac{3}{8}$$

$$\frac{30}{50}$$

$$\frac{9}{12}$$

$$\frac{27}{45}$$

$$\frac{5}{25}$$

$$\frac{40}{48}$$

$$\frac{12}{20}$$

$$\frac{12}{32}$$

$$\frac{6}{36}$$

$$\frac{4}{6}$$

$$\frac{9}{27}$$

$$\frac{4}{6}$$

$$\frac{8}{24}$$

$$\frac{3}{24}$$

$$\frac{8}{64}$$

$$\frac{33}{44}$$

$$\frac{6}{30}$$

$$\frac{15}{25}$$

$$\frac{35}{42}$$

$$\frac{21}{28}$$

$$\frac{6}{9}$$

$$\frac{7}{14}$$

$$\frac{9}{24}$$

$$\frac{10}{12}$$

$$\frac{24}{32}$$

$$\frac{4}{6}$$

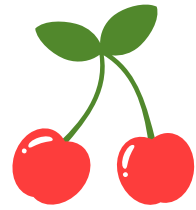
$$\frac{7}{56}$$

$$\frac{21}{56}$$

$$\frac{33}{55}$$

Word Problems

1. Emma picks 143 cherries in her vegetable garden.
She divides the cherries into 13 boxes.
How many cherries are in each box?



_____ cherries

2. Zookeeper Harry has 9 large boxes.
Each box contains 24 fish.
How many fish are there in total?

_____ fish

3. There are 1,024 trees in the forest.
The ranger needs to cut down 55 trees.
How many trees are left?

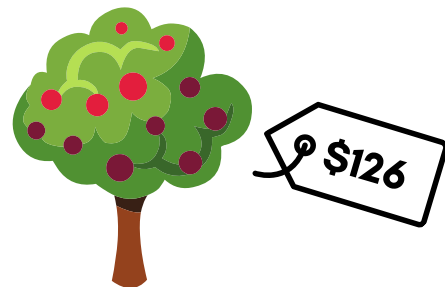


_____ trees

4. On Monday, the ranger counts 845 trees.
On Tuesday, he counts another 384.
How many trees does the ranger count in total?

_____ trees

5. A large fruit tree costs \$126.
Adil buys 4 of them.
How much does he have to pay in total?



_____ dollars

Done? Practice 10 word problems at www.mathwordproblems.com
You can play a math game afterward!

Simplifying Fractions

Simplify the fractions as much as possible.

$$\frac{30}{35} = \text{---}$$

$$\frac{42}{49} = \text{---}$$

$$\frac{6}{15} = \text{---}$$

$$\frac{16}{20} = \text{---}$$

$$\frac{60}{70} = \text{---}$$

$$\frac{10}{18} = \text{---}$$

$$\frac{25}{35} = \text{---}$$

$$\frac{16}{56} = \text{---}$$

$$\frac{45}{72} = \text{---}$$

$$\frac{40}{64} = \text{---}$$

$$\frac{12}{30} = \text{---}$$

$$\frac{8}{28} = \text{---}$$

$$\frac{12}{14} = \text{---}$$

$$\frac{4}{6} = \text{---}$$

$$\frac{15}{40} = \text{---}$$

$$\frac{30}{40} = \text{---}$$

$$\frac{20}{30} = \text{---}$$

$$\frac{16}{28} = \text{---}$$

$$\frac{12}{32} = \text{---}$$

$$\frac{16}{24} = \text{---}$$

$$\frac{24}{32} = \text{---}$$

$$\frac{4}{14} = \text{---}$$

$$\frac{8}{12} = \text{---}$$

$$\frac{72}{81} = \text{---}$$

$$\frac{36}{81} = \text{---}$$

$$\frac{63}{81} = \text{---}$$

$$\frac{6}{10} = \text{---}$$

$$\frac{10}{12} = \text{---}$$

$$\frac{21}{49} = \text{---}$$

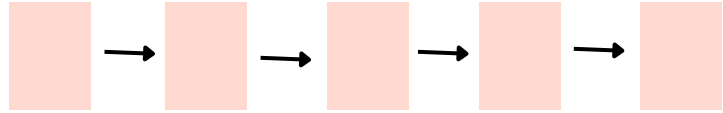
$$\frac{40}{45} = \text{---}$$

Done? Practice 10 word problems at www.mathwordproblems.com
You can play a math game afterward!

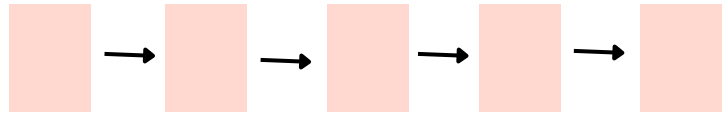
Fractions

Arrange the fractions from largest to smallest.

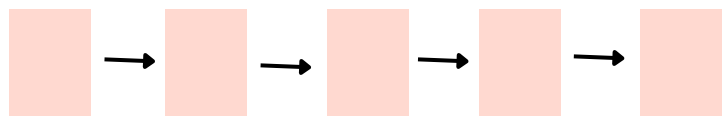
$\frac{2}{5} \quad \frac{1}{5} \quad \frac{4}{5} \quad \frac{3}{5}$



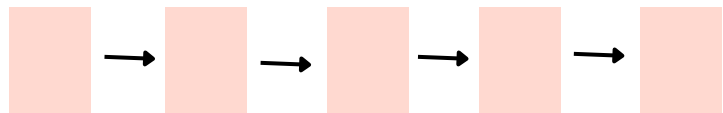
$\frac{6}{8} \quad \frac{4}{8} \quad \frac{7}{8} \quad \frac{1}{8}$



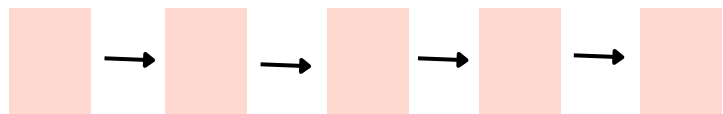
$\frac{4}{6} \quad \frac{1}{6} \quad \frac{2}{6} \quad \frac{5}{6}$



$\frac{5}{9} \quad \frac{3}{9} \quad \frac{7}{9} \quad \frac{8}{9}$



$\frac{3}{10} \quad \frac{5}{10} \quad \frac{8}{10} \quad \frac{1}{10}$



Arrange the fractions from smallest to largest.

$\frac{1}{8} \quad \frac{1}{5} \quad \frac{1}{4} \quad \frac{1}{6}$



$\frac{1}{5} \quad \frac{1}{2} \quad \frac{1}{3} \quad \frac{1}{4}$



$\frac{1}{7} \quad \frac{1}{3} \quad \frac{1}{5} \quad \frac{1}{6}$



$\frac{1}{6} \quad \frac{1}{2} \quad \frac{1}{4} \quad \frac{1}{5}$



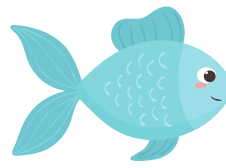
$\frac{1}{8} \quad \frac{1}{5} \quad \frac{1}{10} \quad \frac{1}{2}$



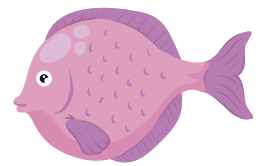
Word Problems

1. There are 1,045 blue fish and 238 purple fish in the aquarium. How many fish are there in total?

_____ fish



1,045



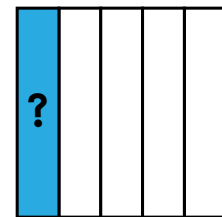
238

2. There are 1,263 trees in the forest. After 720 trees are cut down and 660 trees are planted, how many trees are in the forest now?

_____ trees

3. There are 125 animals in the zoo. $\frac{1}{5}$ of the animals are mammals. How many mammals are there in the zoo?

_____ mammals



125

4. $\frac{1}{4}$ of the fruit trees are apple trees. There are 7 apple trees. How many fruit trees are there in total?

_____ fruit trees

5. It is now 3:25 PM. The animals are fed at 5:00 PM. How many minutes are there until then?

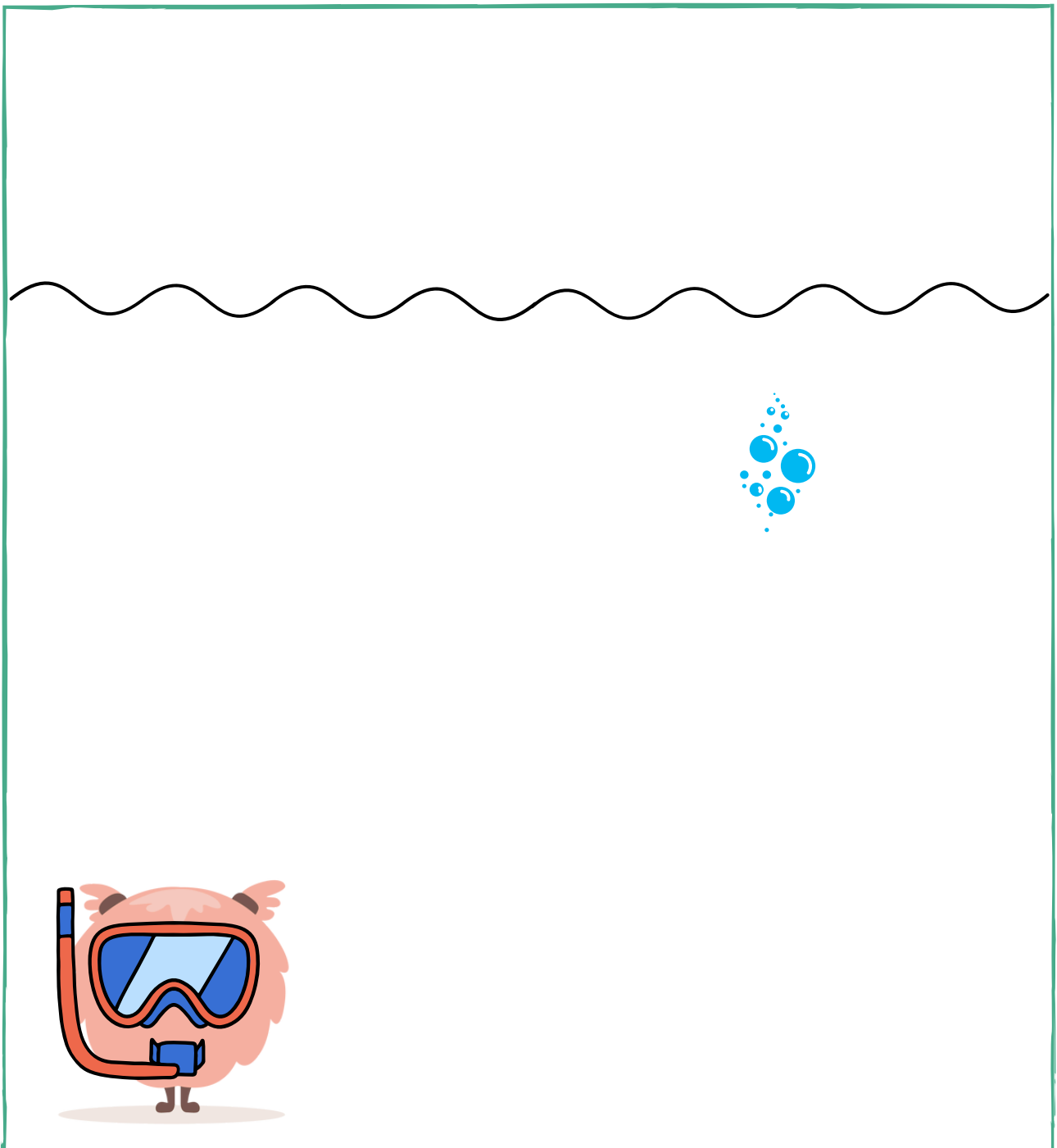
_____ minutes



Done? Practice 10 word problems at www.mathwordproblems.com
You can play a math game afterward!

Draw what you read

Flip is at the bottom of the sea, looking around. On the seabed next to Flip lies a starfish. Beside the starfish stands a beautiful water plant. Nearby, a small red seahorse is swimming. How special! Flip looks further and sees three beautiful fish. Two of the fish have white and red stripes. The other fish is orange and yellow. Suddenly, Flip sees a jellyfish further away in the water. On the water floats a small boat. In the boat sits Tom. He is wearing a striped shirt and a cap on his head. That's a good thing because the sun is shining brightly on the water.



Answers

1. A laptop costs \$879. A customer buys 2 at once.
He gets a total discount of \$120.
How much does he have to pay?



1,638 dollars

2. Oliver has 422 beads.
Jack has 379 beads.
How many beads do they have together?

801 beads

3. Sophie earns \$80 every week.
She saves half of her money each week.
How many weeks will it take for her to save \$320?



8 weeks

4. After exercising, Ruben drinks one liter of water.
Max drinks 628 milliliters.
How many milliliters more does Ruben drink than Max?

372 milliliters

5. The party starts at 16:35.
It is now 14:20.
How many minutes until the party starts?

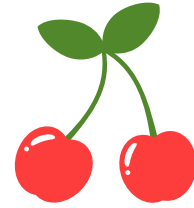


55 minutes

Done? Practice 10 word problems at www.mathwordproblems.com
You can play a math game afterward!

Answers

1. Emma picks 143 cherries in her vegetable garden.
She divides the cherries into 13 boxes.
How many cherries are in each box?



11 cherries

2. Zookeeper Harry has 9 large boxes.
Each box contains 24 fish.
How many fish are there in total?

216 fish

3. There are 1,024 trees in the forest.
The ranger needs to cut down 55 trees.
How many trees are left?

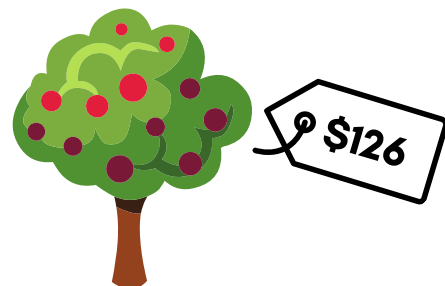


969 trees

4. On Monday, the ranger counts 845 trees.
On Tuesday, he counts another 384.
How many trees does the ranger count in total?

1,229 trees

5. A large fruit tree costs \$126.
Adil buys 4 of them.
How much does he have to pay in total?



504 dollars

Done? Practice 10 word problems at www.mathwordproblems.com
You can play a math game afterward!

Answers

Simplify the fractions as much as possible.

$$\frac{30}{35} = \frac{6}{7}$$

$$\frac{42}{49} = \frac{6}{7}$$

$$\frac{6}{15} = \frac{2}{5}$$

$$\frac{16}{20} = \frac{4}{5}$$

$$\frac{60}{70} = \frac{6}{7}$$

$$\frac{10}{18} = \frac{5}{9}$$

$$\frac{25}{35} = \frac{5}{7}$$

$$\frac{16}{56} = \frac{2}{7}$$

$$\frac{45}{72} = \frac{5}{8}$$

$$\frac{40}{64} = \frac{5}{8}$$

$$\frac{12}{30} = \frac{2}{5}$$

$$\frac{8}{28} = \frac{2}{7}$$

$$\frac{12}{14} = \frac{6}{7}$$

$$\frac{4}{6} = \frac{2}{3}$$

$$\frac{15}{40} = \frac{3}{8}$$

$$\frac{30}{40} = \frac{3}{4}$$

$$\frac{20}{30} = \frac{2}{3}$$

$$\frac{16}{28} = \frac{4}{7}$$

$$\frac{12}{32} = \frac{3}{8}$$

$$\frac{16}{24} = \frac{2}{3}$$

$$\frac{24}{32} = \frac{3}{4}$$

$$\frac{4}{14} = \frac{2}{7}$$

$$\frac{8}{12} = \frac{2}{3}$$

$$\frac{72}{81} = \frac{8}{9}$$

$$\frac{36}{81} = \frac{4}{9}$$

$$\frac{63}{81} = \frac{7}{9}$$

$$\frac{6}{10} = \frac{3}{5}$$

$$\frac{10}{12} = \frac{5}{6}$$

$$\frac{21}{49} = \frac{3}{7}$$

$$\frac{40}{45} = \frac{8}{9}$$

Done? Practice 10 word problems at www.mathwordproblems.com

You can play a math game afterward!

Answers

Arrange the fractions from largest to smallest.

$$\frac{2}{5} \quad \frac{1}{5} \quad \frac{4}{5} \quad \frac{3}{5}$$

$$\frac{4}{5} \rightarrow \frac{3}{5} \rightarrow \frac{2}{5} \rightarrow \frac{1}{5}$$

$$\frac{6}{8} \quad \frac{4}{8} \quad \frac{7}{8} \quad \frac{1}{8}$$

$$\frac{7}{8} \rightarrow \frac{6}{8} \rightarrow \frac{4}{8} \rightarrow \frac{1}{8}$$

$$\frac{4}{6} \quad \frac{1}{6} \quad \frac{2}{6} \quad \frac{5}{6}$$

$$\frac{5}{6} \rightarrow \frac{4}{6} \rightarrow \frac{2}{6} \rightarrow \frac{1}{6}$$

$$\frac{5}{9} \quad \frac{3}{9} \quad \frac{7}{9} \quad \frac{8}{9}$$

$$\frac{8}{9} \rightarrow \frac{7}{9} \rightarrow \frac{5}{9} \rightarrow \frac{3}{9}$$

$$\frac{3}{10} \quad \frac{5}{10} \quad \frac{8}{10} \quad \frac{1}{10}$$

$$\frac{8}{10} \rightarrow \frac{5}{10} \rightarrow \frac{3}{10} \rightarrow \frac{1}{10}$$

Arrange the fractions from smallest to largest.

$$\frac{1}{8} \quad \frac{1}{5} \quad \frac{1}{4} \quad \frac{1}{6}$$

$$\frac{1}{8} \rightarrow \frac{1}{6} \rightarrow \frac{1}{5} \rightarrow \frac{1}{4}$$

$$\frac{1}{5} \quad \frac{1}{2} \quad \frac{1}{3} \quad \frac{1}{4}$$

$$\frac{1}{5} \rightarrow \frac{1}{4} \rightarrow \frac{1}{3} \rightarrow \frac{1}{2}$$

$$\frac{1}{7} \quad \frac{1}{3} \quad \frac{1}{5} \quad \frac{1}{6}$$

$$\frac{1}{7} \rightarrow \frac{1}{6} \rightarrow \frac{1}{5} \rightarrow \frac{1}{3}$$

$$\frac{1}{6} \quad \frac{1}{2} \quad \frac{1}{4} \quad \frac{1}{5}$$

$$\frac{1}{6} \rightarrow \frac{1}{5} \rightarrow \frac{1}{4} \rightarrow \frac{1}{2}$$

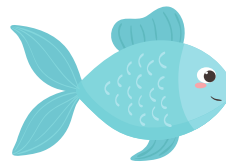
$$\frac{1}{8} \quad \frac{1}{5} \quad \frac{1}{10} \quad \frac{1}{2}$$

$$\frac{1}{10} \rightarrow \frac{1}{8} \rightarrow \frac{1}{5} \rightarrow \frac{1}{2}$$

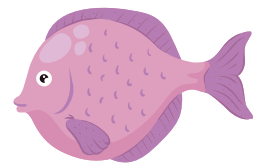
Answers

1. There are 1,045 blue fish and 238 purple fish in the aquarium. How many fish are there in total?

1,283 fish



1,045



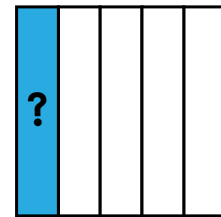
238

2. There are 1,263 trees in the forest. After 720 trees are cut down and 660 trees are planted, how many trees are in the forest now?

1,203 trees

3. There are 125 animals in the zoo. $\frac{1}{5}$ of the animals are mammals. How many mammals are there in the zoo?

625 mammals



125

4. $\frac{1}{4}$ of the fruit trees are apple trees. There are 7 apple trees. How many fruit trees are there in total?

28 fruit trees

5. It is now 3:25 PM. The animals are fed at 5:00 PM. How many minutes are there until then?

95 minutes



Done? Practice 10 word problems at www.mathwordproblems.com
You can play a math game afterward!

MATH WORD PROBLEMS

Find me at

Teachers Pay Teachers



Thank you for downloading.
I hope this recourse is fun and
engaging for your students!